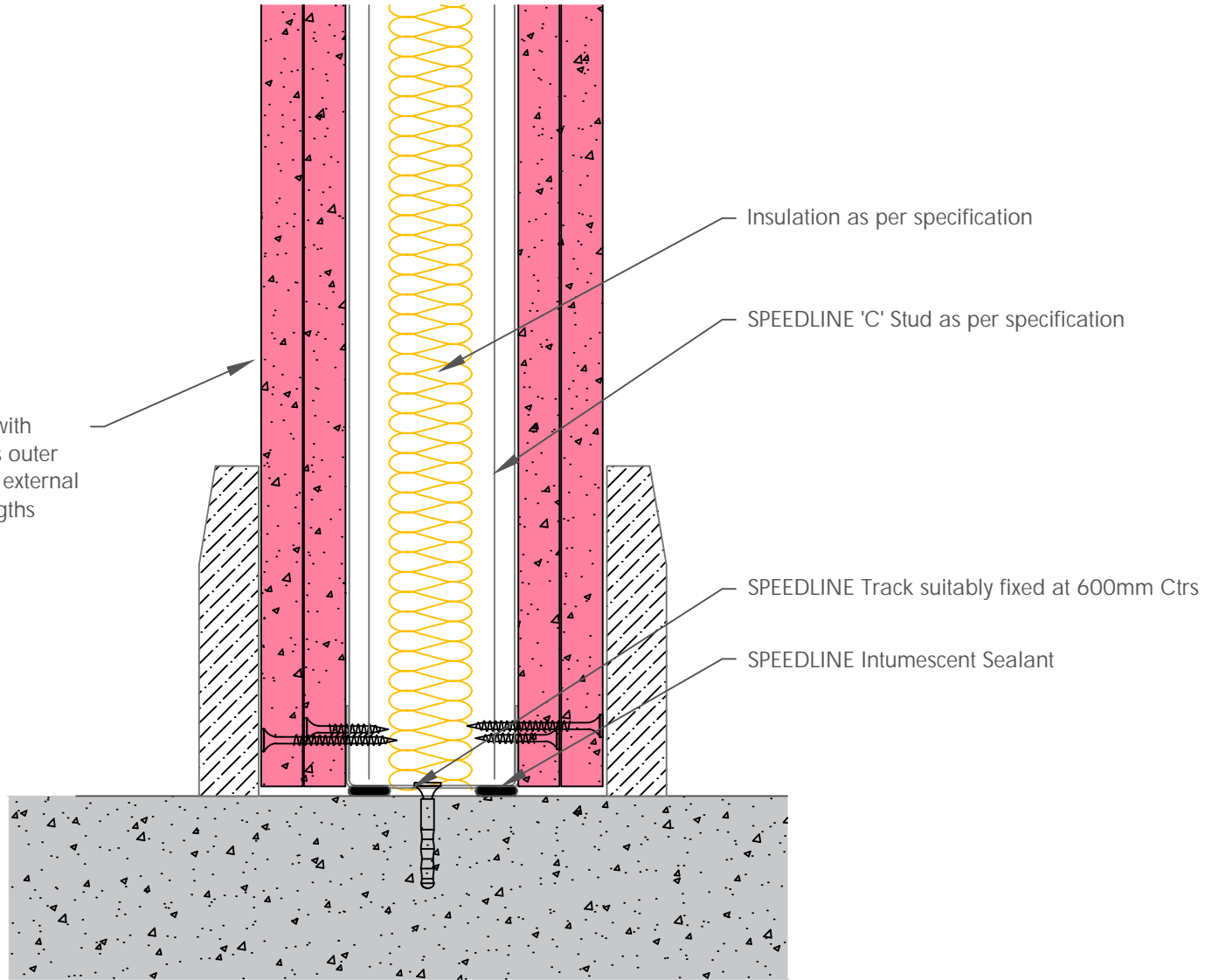


| Board Thickness | Speedline Drywall Fixing Length |
|-----------------|---------------------------------|
| 12.5mm & 15mm | 25mm |
| 12.5mm + 12.5mm | 25mm + 38mm |
| 12.5mm + 15mm | 25mm + 42mm |
| 15mm + 15mm | 25mm + 42mm |

Two layers of Gypsum Plasterboard fixed with SPEEDLINE Drywall Screws at 300mm Ctrs outer layer, 600mm Ctrs inner layer (200mm at external angles). Refer to above table for fixing lengths



All performance data and system specifications are for systems constructed with materials & components as shown. The inclusion or substitution of any other manufacturers materials or components could invalidate test data and system performance and permission must be given in writing by SIG PLC.

The information is provided in good faith and is based upon details received which are assumed to include all relevant facts.

We accept no liability for its accuracy, adequacy or completeness. Recipients must satisfy themselves as to its suitability as we do not accept responsibility for any claims or consequential loss. Acceptance of the content and subsequent design responsibility rests entirely with the recipients who should then produce accepted details on their own company documentation.

CDR No: 16

SCALE: NTS

DATE: 12/02/19

C STUD
BASE DETAIL
DOUBLE LAYER
502x12FRIns

Details to be read in conjunction with project specification guidelines

Adsetts House,
16 Europa View,
Sheffield Business Park,
Sheffield,
S9 1XH.

T: 0114 231 8030

E: enquiries@speedlinedrywall.co.uk

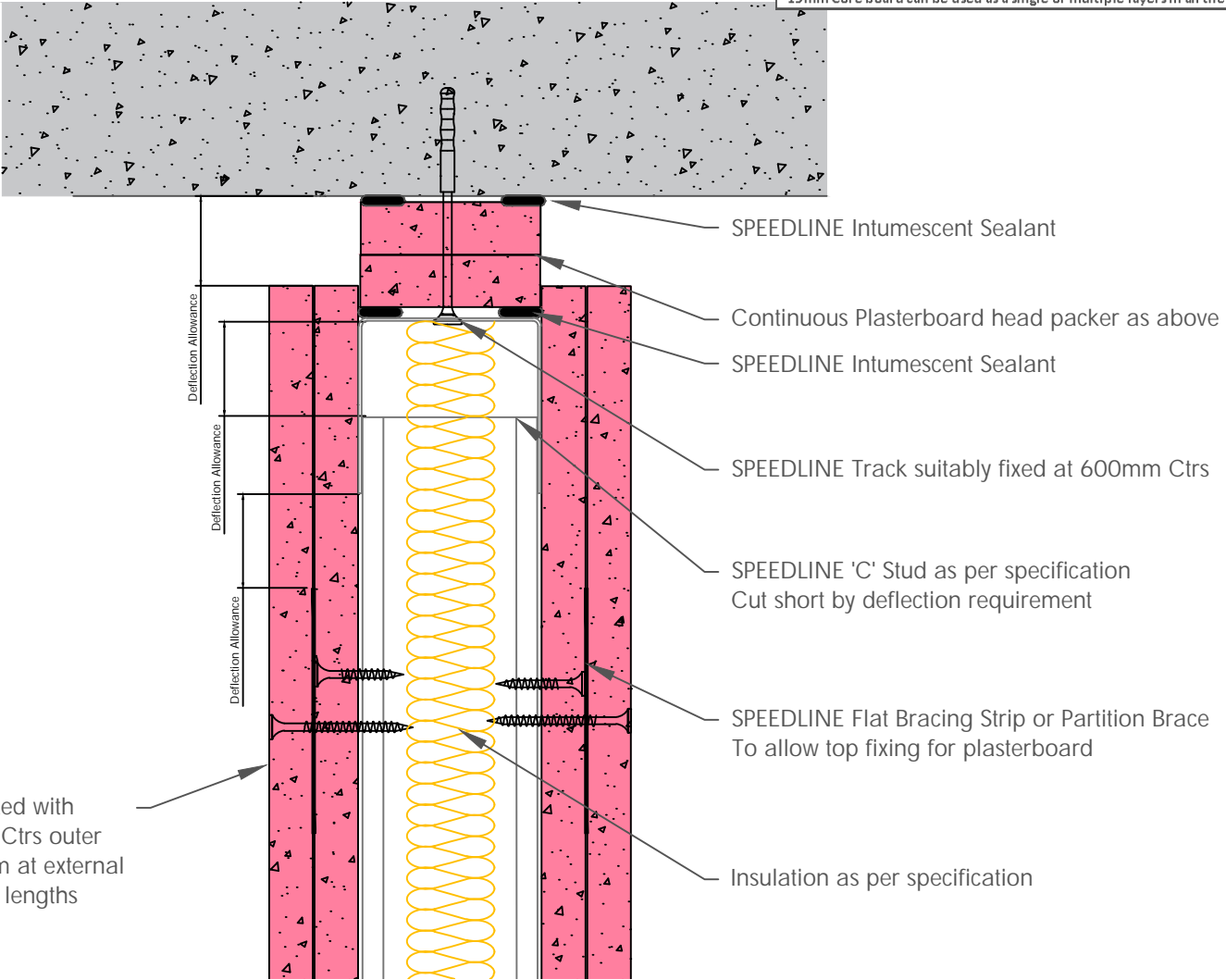


| Board Thickness | Speedline Drywall Fixing Length |
|-----------------|---------------------------------|
| 12.5mm & 15mm | 25mm |
| 12.5mm + 12.5mm | 25mm + 38mm |
| 12.5mm + 15mm | 25mm + 42mm |
| 15mm + 15mm | 25mm + 42mm |

DO NOT SCREW FIX THE PLASTERBOARD TO THE STUD OR TRACK ABOVE PARTITION BRACE.
DO NOT FIX STUDS TO HEAD TRACKS AS THIS WILL STOP DEFLECTION HEAD FROM MOVING

| HEAD PACKER THICKNESS PER DEFLECTION ALLOWANCE ON 50 & 60mm : | | | | |
|---|------------|-----------------|------------------|------------------|
| Head Packers by Fire Rating | | | | |
| Deflection | Head Track | 30 Mins | 60Mins | 90 & 120Mins |
| Up to 15mm | SPEDT | Min 2x12.5mm WB | Min 2x12.5mm SR* | Min 2x12.5mm FR* |
| Up to 25mm | SPEDT | Min 2x15mm WB | Min 2x15mm SR | Min 2x15mm FR |

WB=Wallboard SR=Sound Resistant Board FR=Fire Resistant Board (Type F)
*19mm Core board can be used as a single or multiple layers in all the above build-ups



Two layers of Gypsum Plasterboard fixed with SPEEDLINE Drywall Screws at 300mm Ctrs outer layer, 600mm Ctrs inner layer (200mm at external angles). Refer to above table for fixing lengths

All performance data and system specifications are for systems constructed with materials & components as shown. The inclusion or substitution of any other manufacturers materials or components could invalidate test data and system performance and permission must be given in writing by SIG PLC.

The information is provided in good faith and is based upon details received which are assumed to include all relevant facts.

We accept no liability for its accuracy, adequacy or completeness. Recipients must satisfy themselves as to its suitability as we do not accept responsibility for any claims or consequential loss. Acceptance of the content and subsequent design responsibility rests entirely with the recipients who should then produce accepted details on their own company documentation.

| | | |
|--|------------|----------------|
| CDR No: 21B | SCALE: NTS | DATE: 12/02/19 |
| C STUD DEFLECTION HEAD DETAIL UP TO 60 MINUTES DOUBLE LAYER 502x12FRIns | | |
| Details to be read in conjunction with project specification guidelines | | |

Adsetts House,
16 Europa View,
Sheffield Business Park,
Sheffield,
S9 1XH.

T: 0114 231 8030

E: enquiries@speedlinedrywall.co.uk



Part of SIG plc

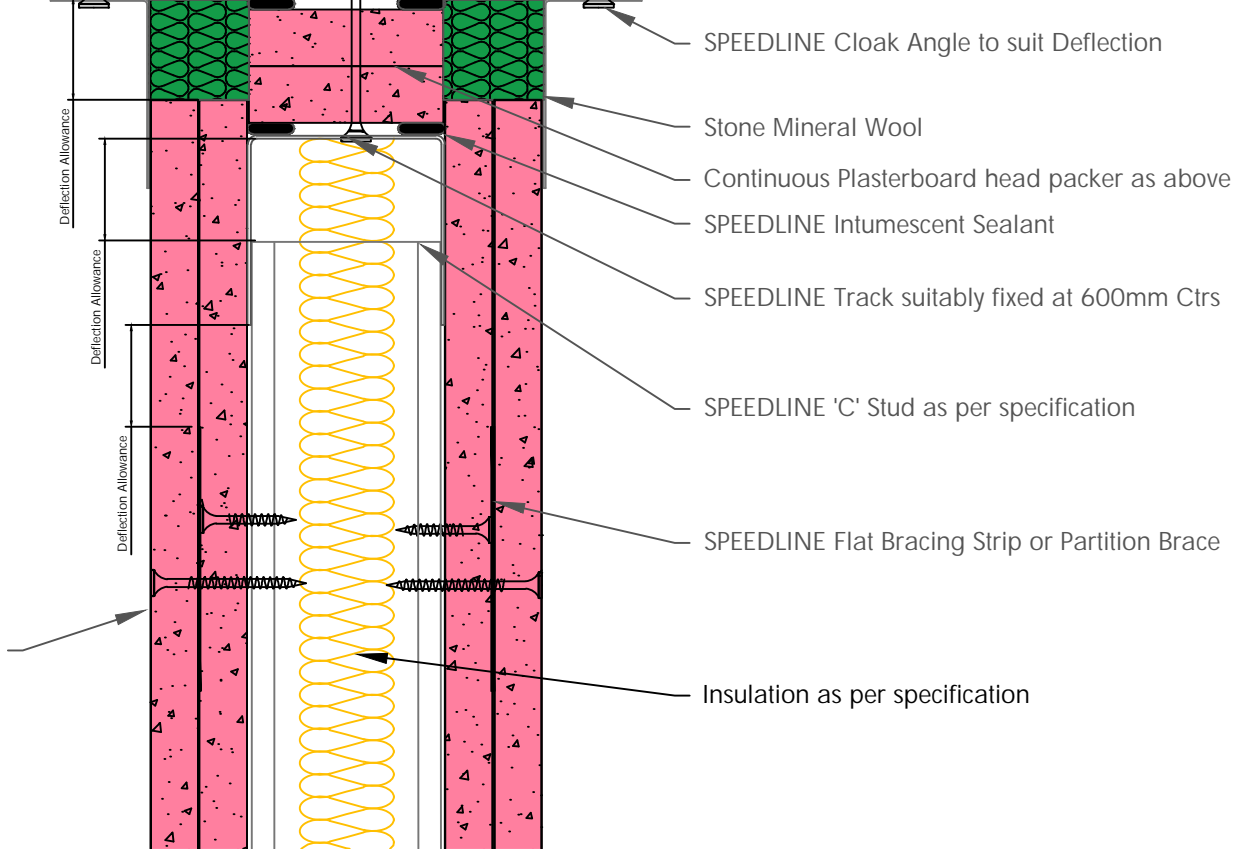
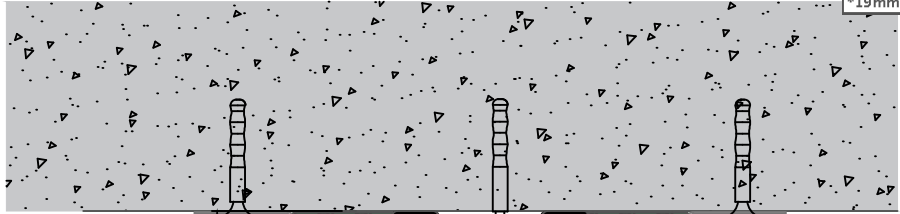
| Board Thickness | Speedline Drywall Fixing Length |
|-----------------|---------------------------------|
| 12.5mm & 15mm | 25mm |
| 12.5mm + 12.5mm | 25mm + 38mm |
| 12.5mm + 15mm | 25mm + 42mm |
| 15mm + 15mm | 25mm + 42mm |

DO NOT SCREW FIX THE PLASTERBOARD TO THE STUD OR TRACK ABOVE PARTITION BRACE.
DO NOT FIX STUDS TO HEAD TRACKS AS THIS WILL STOP DEFLECTION HEAD FROM MOVING

| HEAD PACKER THICKNESS PER DEFLECTION ALLOWANCE ON 50 & 60mm : | | | | |
|---|------------|-----------------|------------------|------------------|
| Head Packers by Fire Rating | | | | |
| Deflection | Head Track | 30 Mins | 60Mins | 90 & 120Mins |
| Up to 15mm | SPEDT | Min 2x12.5mm WB | Min 2x12.5mm SR* | Min 2x12.5mm FR* |
| Up to 25mm | SPEDT | Min 2x15mm WB | Min 2x15mm SR | Min 2x15mm FR |

WB=Wallboard SR=Sound Resistant Board FR=Fire Resistant Board (Type F)

*19mm Core board can be used as a single or multiple layers in all the above build-ups



Two layers of Gypsum Plasterboard fixed with SPEEDLINE Drywall Screws at 300mm Ctrs outer layer, 600mm Ctrs inner layer (200mm at external angles). Refer to above table for fixing lengths

All performance data and system specifications are for systems constructed with materials & components as shown. The inclusion or substitution of any other manufacturers materials or components could invalidate test data and system performance and permission must be given in writing by SIG PLC.

The information is provided in good faith and is based upon details received which are assumed to include all relevant facts.

We accept no liability for its accuracy, adequacy or completeness. Recipients must satisfy themselves as to its suitability as we do not accept responsibility for any claims or consequential loss. Acceptance of the content and subsequent design responsibility rests entirely with the recipients who should then produce accepted details on their own company documentation.

CDR No: 10B

SCALE: NTS

DATE: 12/02/19

C STUD
DEFLECTION HEAD DETAIL WITH CLOAK ANGLE
90 / 120 MINS, DOUBLE LAYER
502x12FRIns

Details to be read in conjunction with project specification guidelines

Adsetts House,
16 Europa View,
Sheffield Business Park,
Sheffield,
S9 1XH.

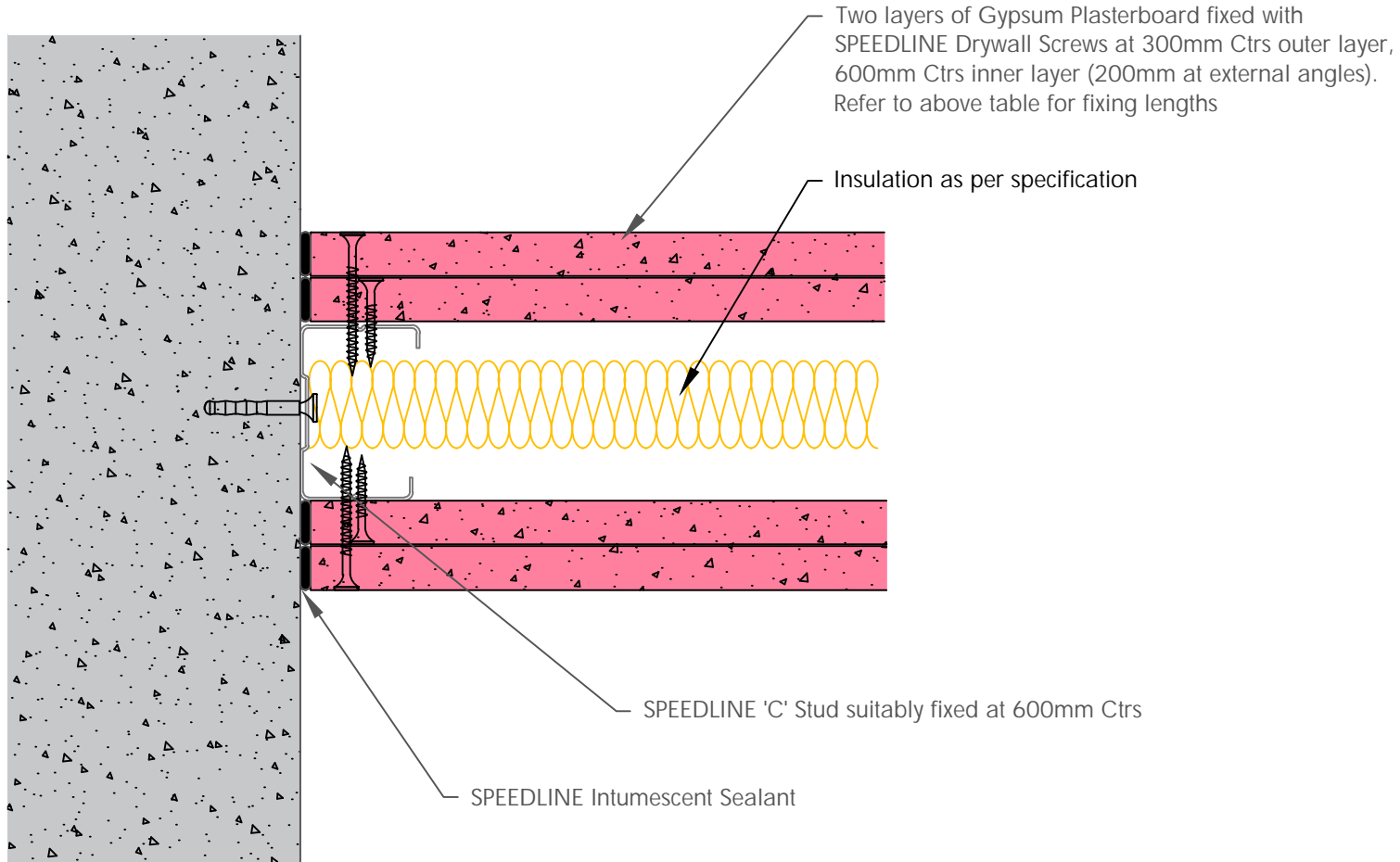
T: 0114 231 8030

E: enquiries@speedlinedrywall.co.uk



Part of SIG plc

| Board Thickness | Speedline Drywall Fixing Length |
|-----------------|---------------------------------|
| 12.5mm & 15mm | 25mm |
| 12.5mm + 12.5mm | 25mm + 38mm |
| 12.5mm + 15mm | 25mm + 42mm |
| 15mm + 15mm | 25mm + 42mm |



All performance data and system specifications are for systems constructed with materials & components as shown. The inclusion or substitution of any other manufacturers materials or components could invalidate test data and system performance and permission must be given in writing by SIG PLC.

The information is provided in good faith and is based upon details received which are assumed to include all relevant facts.

We accept no liability for its accuracy, adequacy or completeness. Recipients must satisfy themselves as to its suitability as we do not accept responsibility for any claims or consequential loss. Acceptance of the content and subsequent design responsibility rests entirely with the recipients who should then produce accepted details on their own company documentation.

CDR No: 119

SCALE: NTS

DATE: 12/02/19

C STUD
WALL JUNCTION DETAIL
DOUBLE LAYER
502x2x12FRIns

Details to be read in conjunction with project specification guidelines

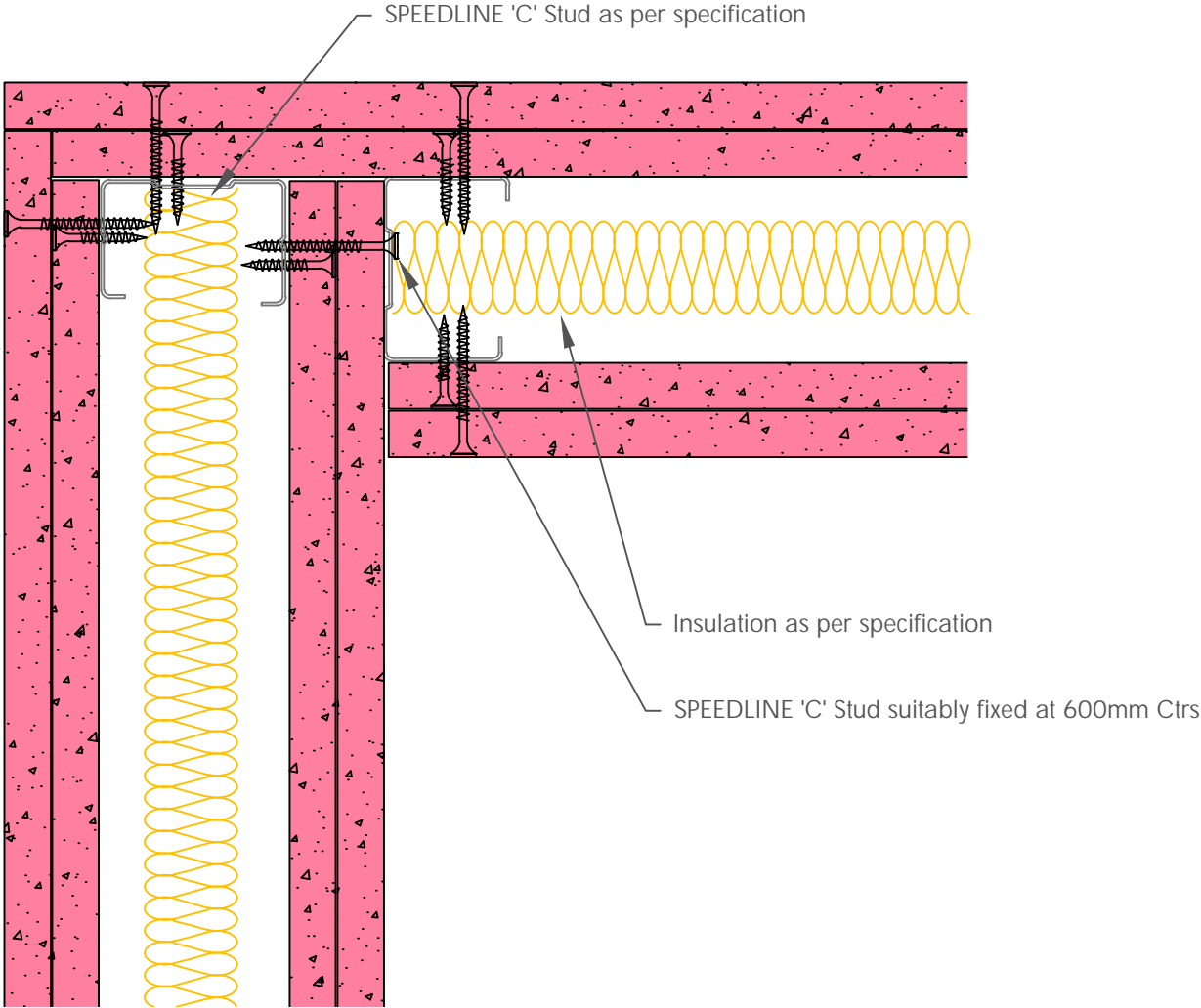
Adsetts House,
16 Europa View,
Sheffield Business Park,
Sheffield,
S9 1XH.

T: 0114 231 8030

E: enquiries@speedlinedrywall.co.uk



| Board Thickness | Speedline Drywall Fixing Length |
|-----------------|---------------------------------|
| 12.5mm & 15mm | 25mm |
| 12.5mm + 12.5mm | 25mm + 38mm |
| 12.5mm + 15mm | 25mm + 42mm |
| 15mm + 15mm | 25mm + 42mm |



Two layers of Gypsum Plasterboard fixed with SPEEDLINE Drywall Screws at 300mm Ctrs outer layer, 600mm Ctrs inner layer (200mm at external angles). Refer to above table for fixing lengths

All performance data and system specifications are for systems constructed with materials & components as shown. The inclusion or substitution of any other manufacturers materials or components could invalidate test data and system performance and permission must be given in writing by SIG PLC.

The information is provided in good faith and is based upon details received which are assumed to include all relevant facts.

We accept no liability for its accuracy, adequacy or completeness. Recipients must satisfy themselves as to its suitability as we do not accept responsibility for any claims or consequential loss. Acceptance of the content and subsequent design responsibility rests entirely with the recipients who should then produce accepted details on their own company documentation.

CDR No: 17A

SCALE: NTS

DATE: 12/02/19

C STUD
CORNER DETAIL
DOUBLE LAYER
502x12FRIns

Details to be read in conjunction with project specification guidelines

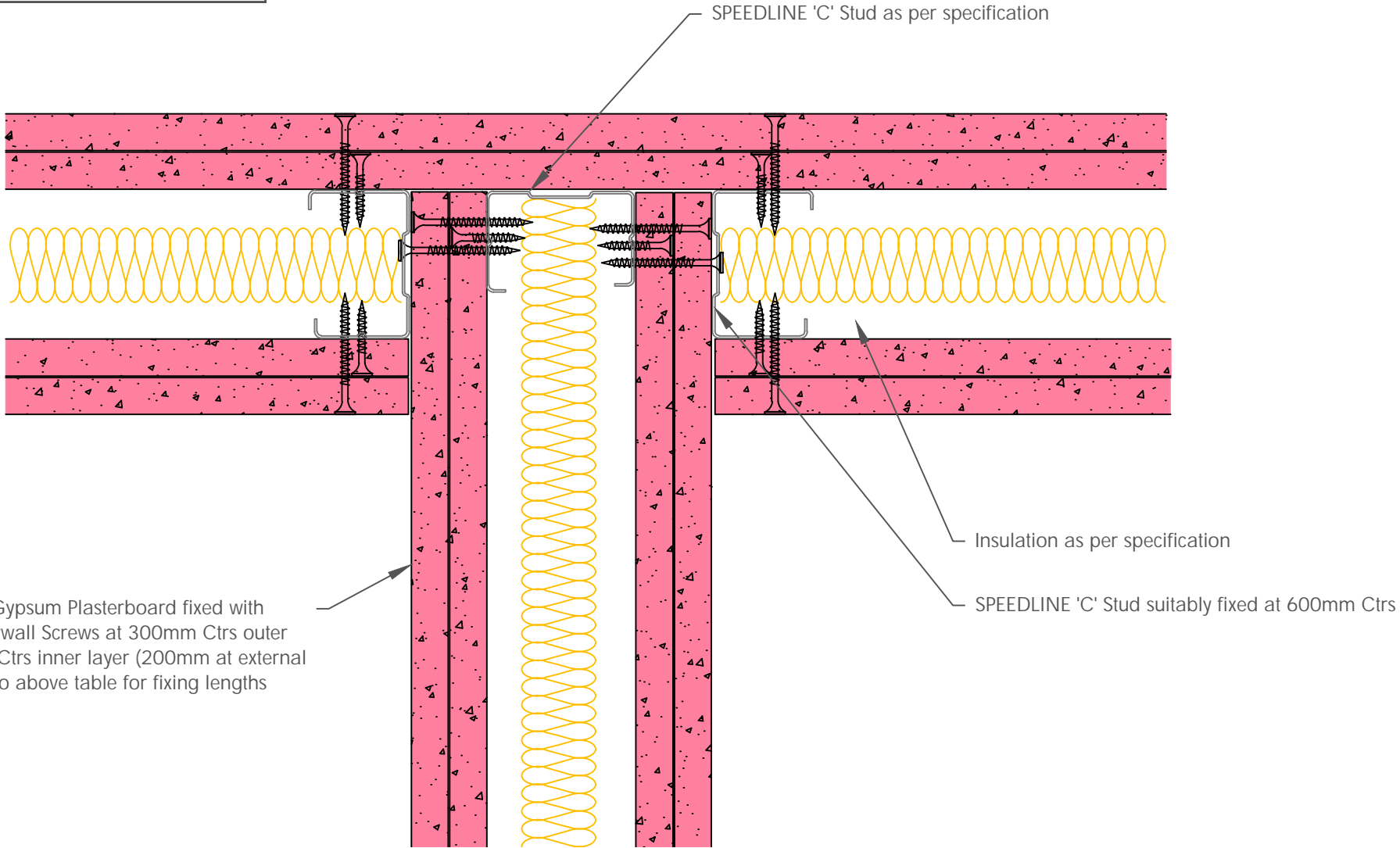
Adsetts House,
16 Europa View,
Sheffield Business Park,
Sheffield,
S9 1XH.

T: 0114 231 8030

E: enquiries@speedlinedrywall.co.uk



| Board Thickness | Speedline Drywall Fixing Length |
|-----------------|---------------------------------|
| 12.5mm & 15mm | 25mm |
| 12.5mm + 12.5mm | 25mm + 38mm |
| 12.5mm + 15mm | 25mm + 42mm |
| 15mm + 15mm | 25mm + 42mm |



Two layers of Gypsum Plasterboard fixed with SPEEDLINE Drywall Screws at 300mm Ctrs outer layer, 600mm Ctrs inner layer (200mm at external angles). Refer to above table for fixing lengths

All performance data and system specifications are for systems constructed with materials & components as shown. The inclusion or substitution of any other manufacturers materials or components could invalidate test data and system performance and permission must be given in writing by SIG PLC.

The information is provided in good faith and is based upon details received which are assumed to include all relevant facts.

We accept no liability for its accuracy, adequacy or completeness. Recipients must satisfy themselves as to its suitability as we do not accept responsibility for any claims or consequential loss. Acceptance of the content and subsequent design responsibility rests entirely with the recipients who should then produce accepted details on their own company documentation.

CDR No: 18A

SCALE: NTS

DATE: 12/02/19

C STUD
ACOUSTIC T JUNCTION DETAIL
DOUBLE LAYER
502x12FRIns

Details to be read in conjunction with project specification guidelines

Adsetts House,
16 Europa View,
Sheffield Business Park,
Sheffield,
S9 1XH.

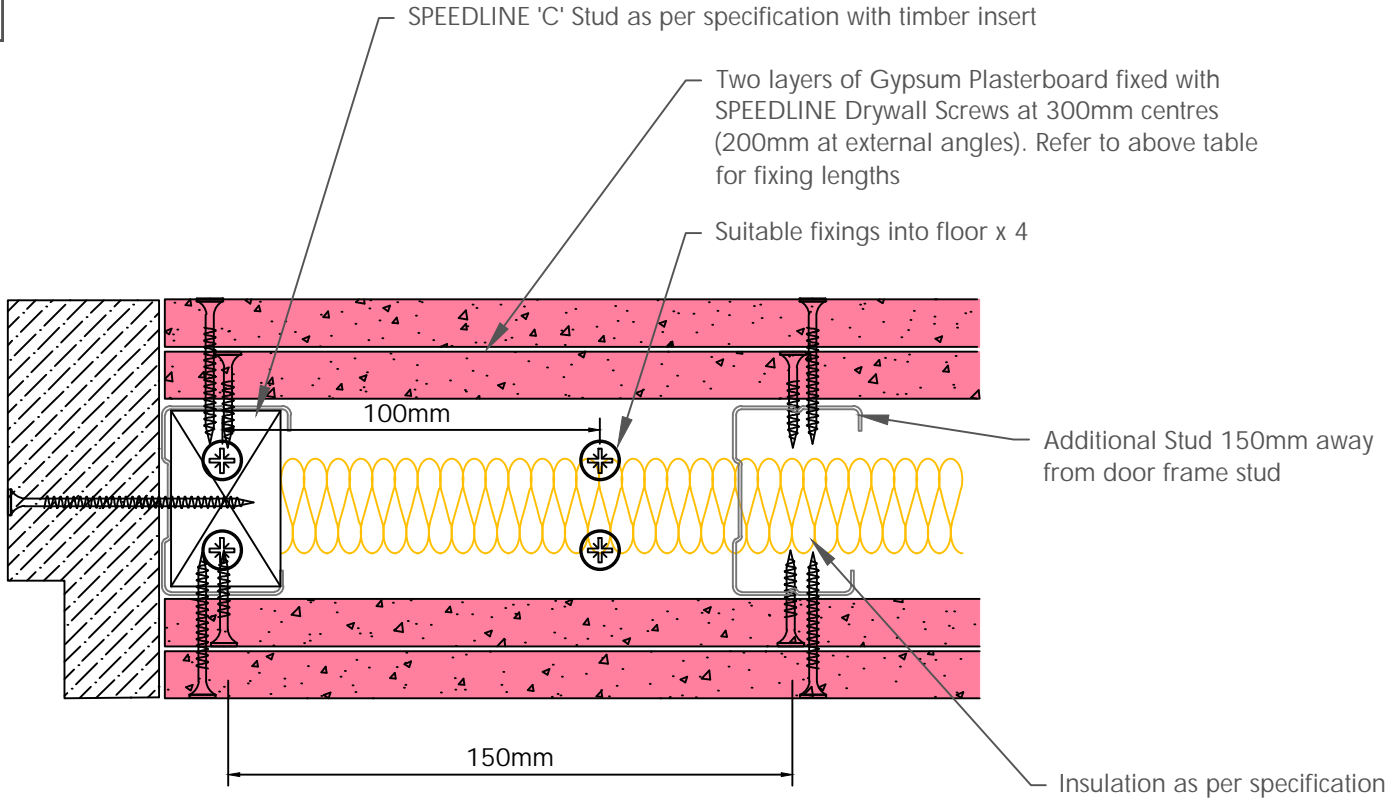
T: 0114 231 8030

E: enquiries@speedlinedrywall.co.uk



Part of sig plc

| Board Thickness | Speedline Drywall Fixing Length |
|-----------------|---------------------------------|
| 12.5mm & 15mm | 25mm |
| 12.5mm + 12.5mm | 25mm + 38mm |
| 12.5mm + 15mm | 25mm + 42mm |
| 15mm + 15mm | 25mm + 42mm |



To be read in conjunction with door manufacturers details & information

All performance data and system specifications are for systems constructed with materials & components as shown. The inclusion or substitution of any other manufacturers materials or components could invalidate test data and system performance and permission must be given in writing by SIG PLC.

The information is provided in good faith and is based upon details received which are assumed to include all relevant facts.

We accept no liability for its accuracy, adequacy or completeness. Recipients must satisfy themselves as to its suitability as we do not accept responsibility for any claims or consequential loss. Acceptance of the content and subsequent design responsibility rests entirely with the recipients who should then produce accepted details on their own company documentation.

| | | |
|---|------------|----------------|
| CDR No: 1170 | SCALE: NTS | DATE: 12/02/19 |
| C STUD DOOR UP TO 25 Kgs DOUBLE LAYER 50212FRIns | | |
| Details to be read in conjunction with project specification guidelines | | |

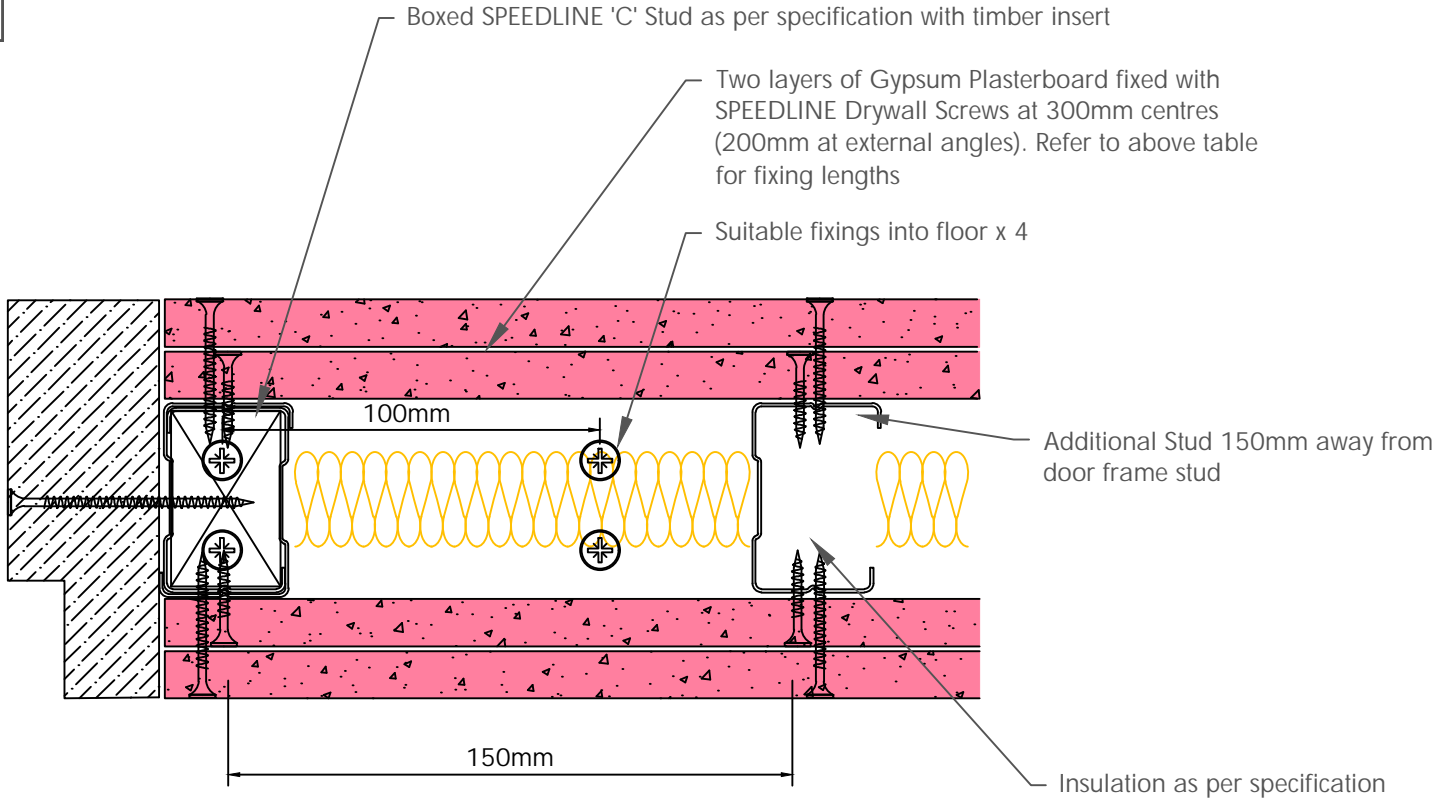
Adsetts House,
16 Europa View,
Sheffield Business Park,
Sheffield,
S9 1XH.

T: 0114 231 8030

E: enquiries@speedlinedrywall.co.uk



| Board Thickness | Speedline Drywall Fixing Length |
|-----------------|---------------------------------|
| 12.5mm & 15mm | 25mm |
| 12.5mm + 12.5mm | 25mm + 38mm |
| 12.5mm + 15mm | 25mm + 42mm |
| 15mm + 15mm | 25mm + 42mm |



To be read in conjunction with door manufacturers details & informantion

All performance data and system specifications are for systems constructed with materials & components as shown. The inclusion or substitution of any other manufacturers materials or components could invalidate test data and system performance and permission must be given in writing by SIG PLC.

The information is provided in good faith and is based upon details received which are assumed to include all relevant facts.

We accept no liability for its accuracy, adequacy or completeness. Recipients must satisfy themselves as to its suitability as we do not accept responsibility for any claims or consequential loss. Acceptance of the content and subsequent design responsibility rests entirely with the recipients who should then produce accepted details on their own company documentation.

| | | |
|---|------------|----------------|
| CDR No: 1172 | SCALE: NTS | DATE: 12/02/19 |
| C STUD DOOR UP TO 60 Kgs DOUBLE LAYER 50212FRIns | | |
| Details to be read in conjunction with project specification guidelines | | |

Adsetts House,
16 Europa View,
Sheffield Business Park,
Sheffield,
S9 1XH.

T: 0114 231 8030

E: enquiries@speedlinedrywall.co.uk

